



FARMA®

**ENERGY CUTTER
BC25**

EN_S1.2-2019W18

Original instruction

SPARE PARTS

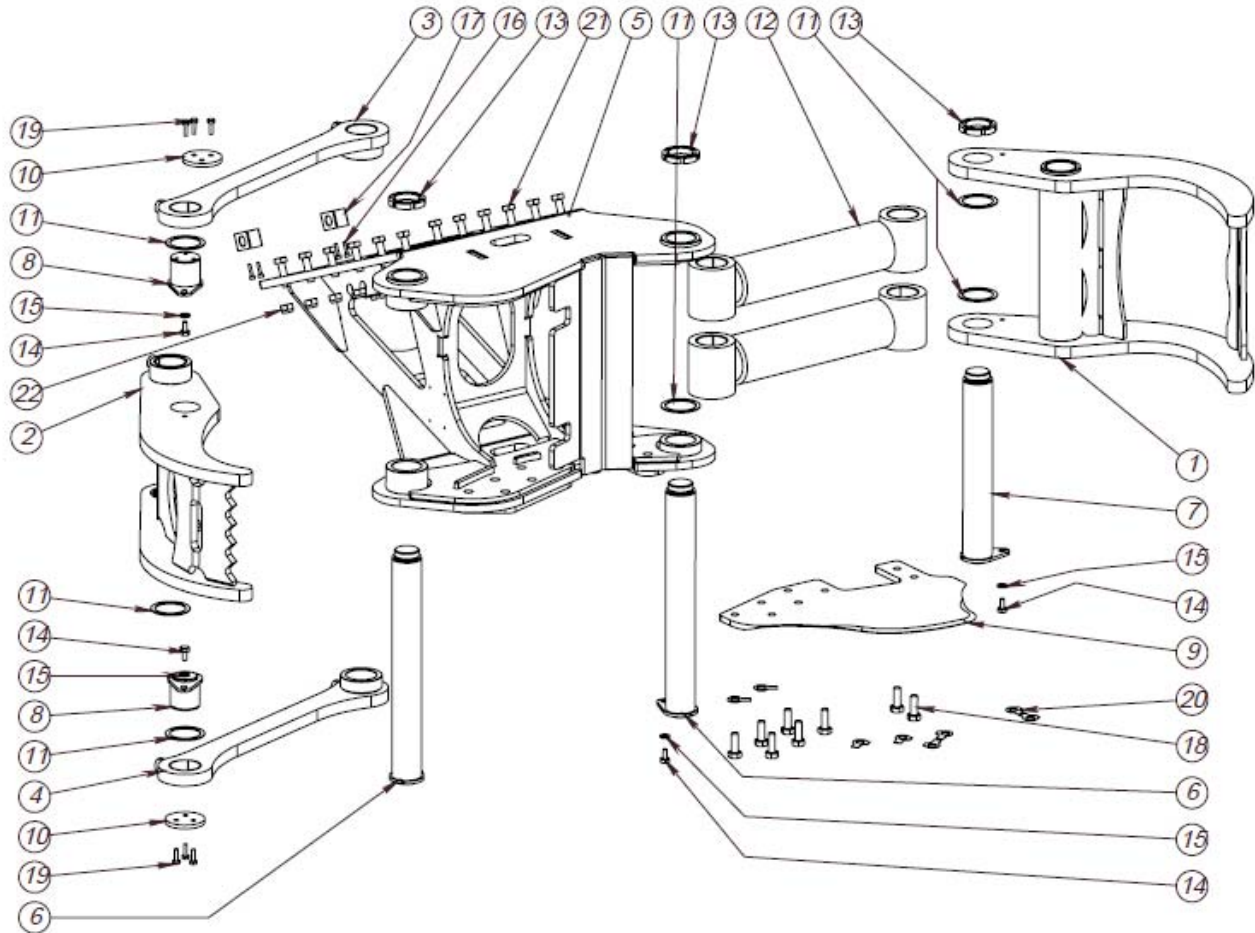
SPARE PARTS

BC25

TABLE OF CONTENTS

1	SPARE PARTS.....	2
1.1	MAIN PARTS, FARMA BC25	2
1.2	LINK ASM.....	3
1.3	OUTER JAW ASM	4
1.4	INNER JAW ASM	5
2	HYDRAULIC SCHEME.....	6
3	TECHNICAL SPECIFICATION.....	8
3.1	TECHNICAL DATA	8
3.2	MAIN DIMENSIONS.....	8
4	EC DECLARATION OF CONFORMITY (SAMPLE).....	11

Original instruction

1 SPARE PARTS
1.1 MAIN PARTS, FARMA BC25

REF: 190425
Main parts ASM, FARMA BC25 (FMWP00519)

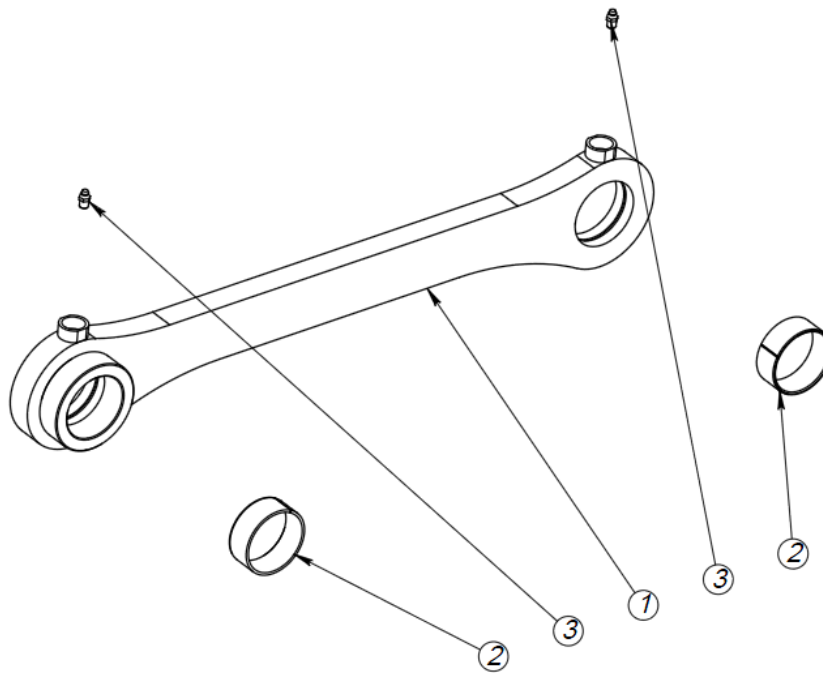
ITEM NO.	PART NUMBER	DESCRIPTION	TYPE	QTY.
1	FMWA00527	Outer yaw		1
2	FMWA00528	Inner yaw		1
3	FMWA00526	Link		1
4	FMWA00526-01	Link		1
5	FMWS01148	Yoke BC25		1
6	FMWS01149	Shaft BC25		2
7	FMWS01149-01	Shaft BC25		1
8	FMWS01149-02	Shaft BC25		2
9	FMWP06361	BC25 Knifeblade	PLT12 - 518x409	1
10	FMWP06499	Plate	PLT8 - D80	2

Original instruction

11	920402	Shim washer for BIGAB	Ø80xØ64x2	6
12	313188	Hydraulic cylinder	90/60 - 270	2
13	907552	Nut Lock/Round	DIN 1804 - M50x1,5 - N	3
14	906170	Bolt Hex. Cap	M10x20 fzb DIN 933	5
15	908225	Washer flat	M10 fzb DIN 125	5
16	906518	Hex. Socket	M6x25 DIN 912	4
17	914616	Clip single	20/04/5390	2
18	906307	Hex. Screw	M16x40 DIN 961	8
19	906160	Bolt Hex. Cap	M8x25 fzb DIN 933	6
20	908675	Lock washer	M16DIN463 Zn	8
21	906228	Bolt Hex. Cap	M16x50 DIN 933	12
22	907237	Nut Hex. Nylock	M16 DIN985	12

REF: 190425

1.2 LINK ASM

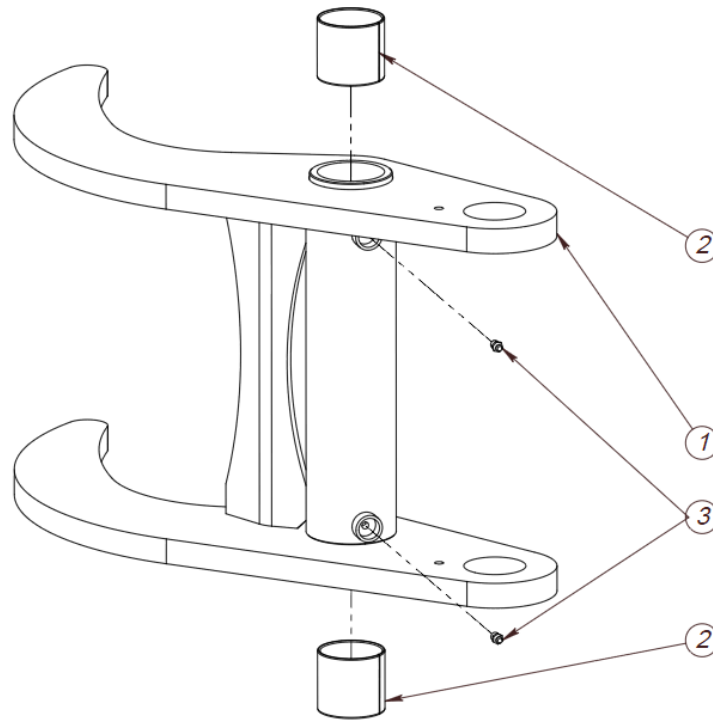

REF: 171206
Link ASM, BC25 (FMWA00526)

ITEM NO.	PART NUMBER	DESCRIPTION	TYPE	QTY.
1	FMWA00526	Link		1
2	909163	Slide bearing	60-65-25	2
3	930106	Grease nipple	M8 DIN 71412	2

REF: 171206

Original instruction

1.3 OUTER JAW ASM



REF: 171206

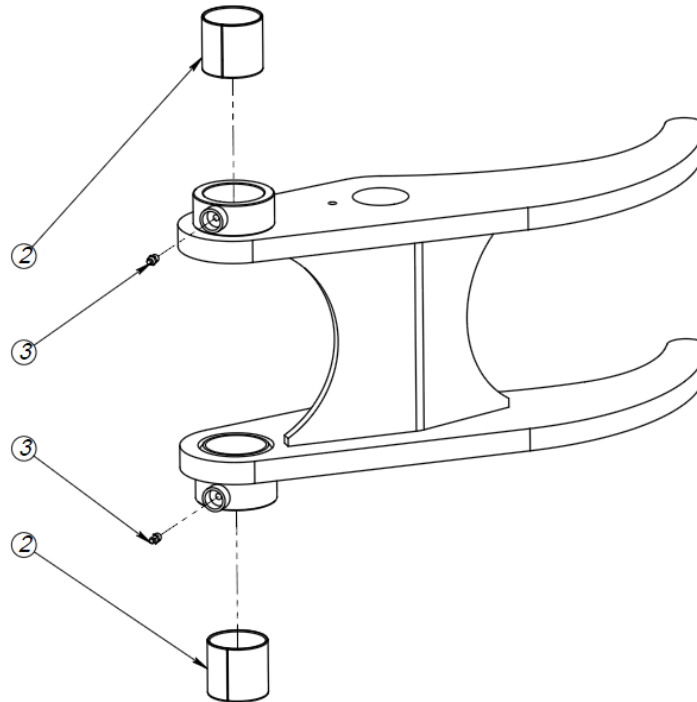
Outer jaw ASM, BC25 (FMWP00527)

ITEM NO.	PART NUMBER	DESCRIPTION	TYPE	QTY.
1	FMWA00527	Outer jaw		1
2	909164	Slide bearing	60-65-60	2
3	930106	Grease nipple	M8 DIN 71412	2

REF: 171206

Original instruction

1.4 INNER JAW ASM



REF: 171206

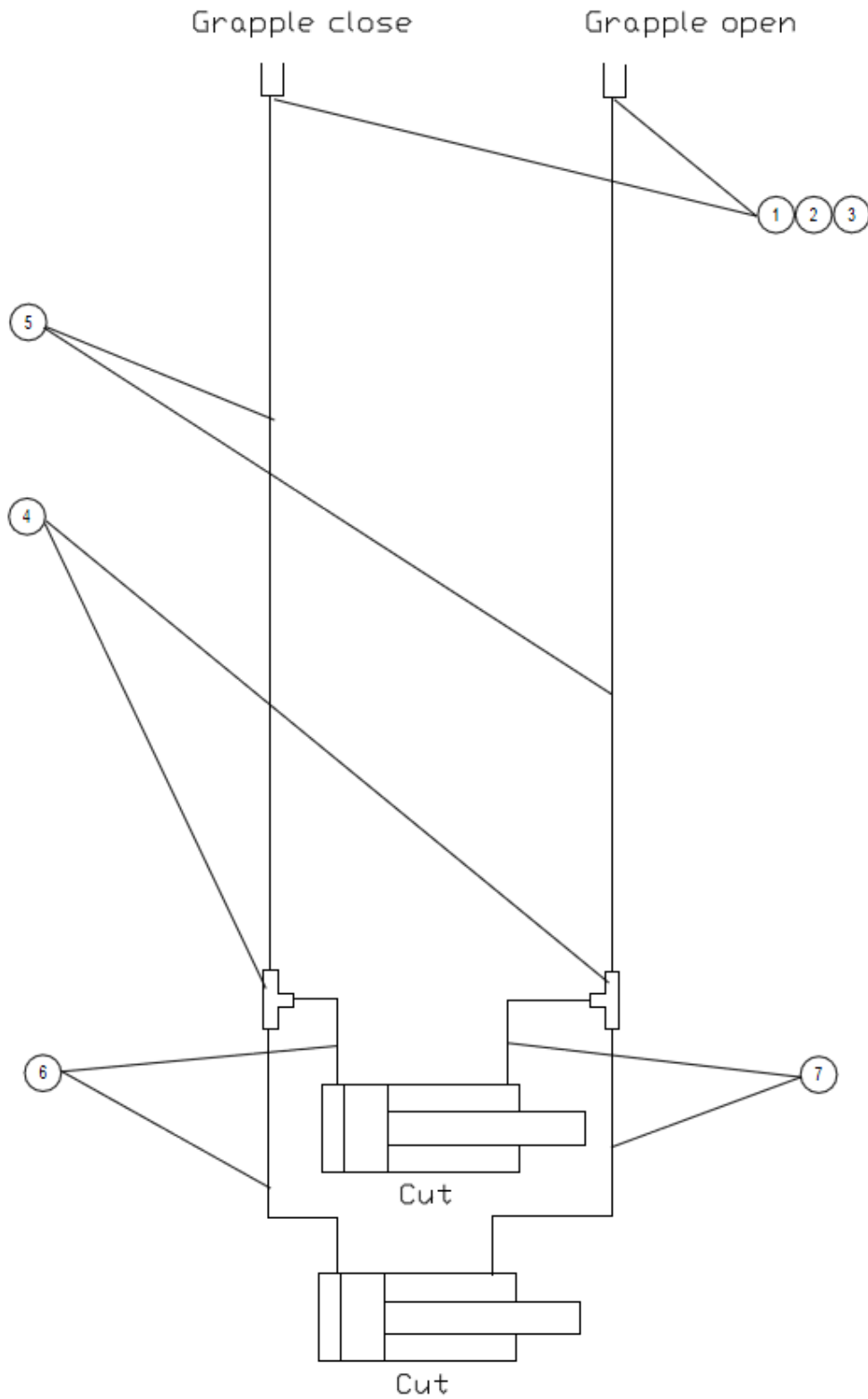
Inner jaw ASM, BC25 (FMWP00528)

ITEM NO.	PART NUMBER	DESCRIPTION	TYPE	QTY.
1	FMWA00528	Inner yaw		1
2	909164	Slide bearing	60-65-60	2
3	930106	Grease nipple	M8 DIN 71412	2

REF: 171206

Original instruction

2 HYDRAULIC SCHEME



REF: 171206

Original instruction

Main parts of BC25 hydraulic scheme (FMWH00042)

ITEM NO.	PART NUMBER	DESCRIPTION	TYPE	QTY.
1	914570	Bayonet coupling	5550-02-08 M 1/2"	2
2	914579	Dust cover	5550-04-08 1/2"	2
3	914584	Rubber bonded seal	5601-01-08 1/2"	2
4	914772	T-nipple	7401-08-08;G1/2"UFxG1/2"UFxG1/2"IR	2
5	FMWH00731	H-hose	42020808-1/2"(2000)-42030808	2
6	FMWH00732	H-hose	42030808-1/2"(500)-42030808	2
7	FMWH00733	H-hose	42030808-1/2"(600)-42030808	2

REF:171206

3 TECHNICAL SPECIFICATION

3.1 TECHNICAL DATA

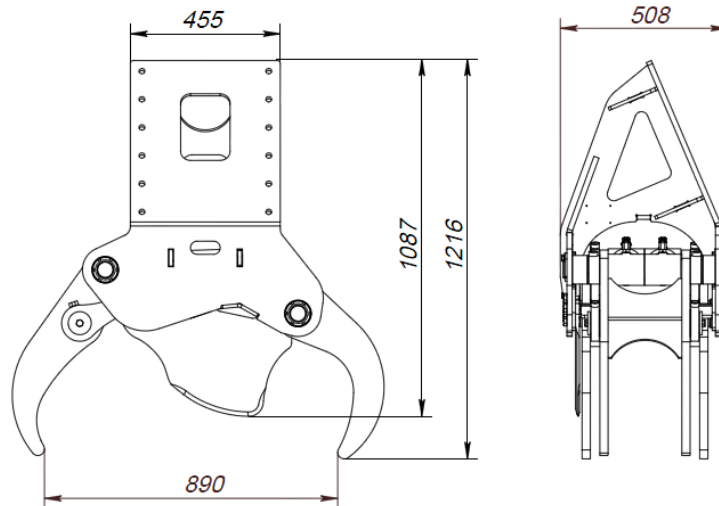
Technical data	BC25
Max. cutting diameter	250 mm*
Max. grapple opening	890 mm
Max. height	630 mm
Max. pressure	25.0 MPa
Recommended oil flow	40-60 l/min**
Weight	350 kg

* The maximum cutting diameter ultimately depends on the choice of tree species.

** Can be used at 25 l/min, although operation becomes slow.

3.2 MAIN DIMENSIONS

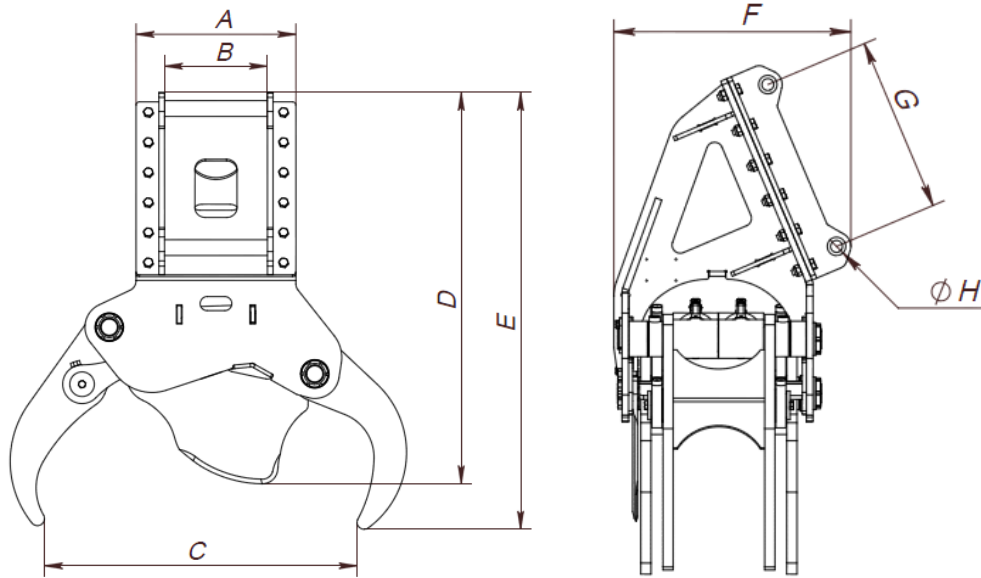
Blank BC25:





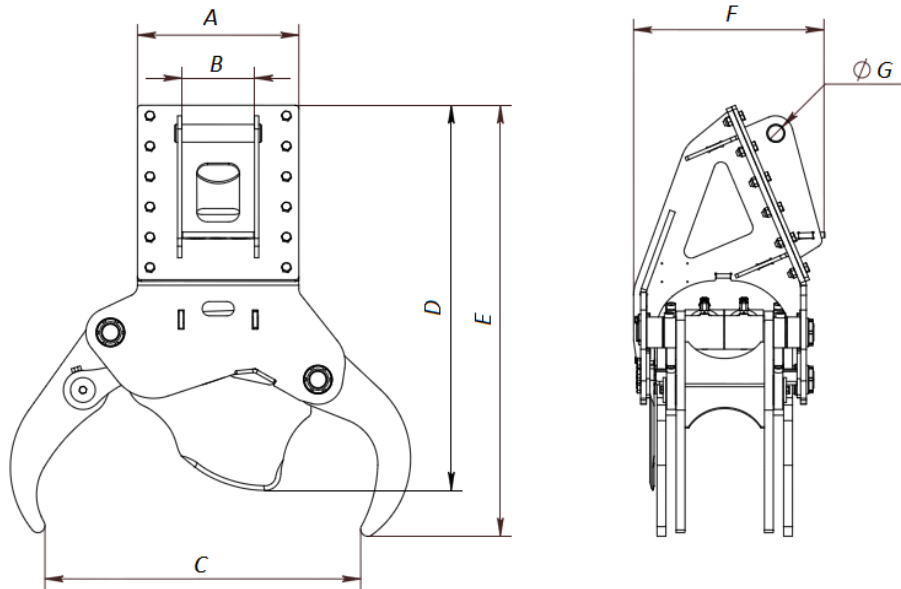
Original instruction

Dimensions of BC25 for excavators:



Measure	S40	S45	S30/180
A	455 mm	455 mm	455 mm
B	200 mm	293 mm	182 mm
C	890 mm	890 mm	890 mm
D	1087 mm	1114 mm	1087 mm
E	1216 mm	1243 mm	1216 mm
F	572 mm	580 mm	513 mm
G	300 mm	430 mm	230 mm
H	Ø 40 mm	Ø 45 mm	Ø 30 mm

Original instruction

Dimensions of BC25 for excavators:


Measure	MS03	MM10/MH10	MS08
A	455 mm	455 mm	455 mm
B	205 mm	205 mm	295 mm
C	890 mm	890 mm	890 mm
D	1087 mm	1087 mm	1110 mm
E	1216 mm	1216 mm	1239 mm
F	537 mm	537 mm	631 mm
G	∅ 50 mm	∅ 50 mm	∅ 60 mm

4 EC DECLARATION OF CONFORMITY (SAMPLE)

EC Declaration of Conformity of the Machinery

Manufacturer:

Fors MW AS

Tule 30

76505 Saue

Estonia

The technical file is compiled by **CEO**

I hereby confirm that this equipment:

Trade mark: **FARMA**

Function: **interchangeable equipment**

Model: **BC25**

Type: **FC** variant: **BC25**

Serial no.: **FCBC25xx1xxxxx**

Trade name: **FARMA BC25 Energy cutter**

Manufacture year: **xxxx**

is manufactured accordingly to demands in **directive 2006/42/EC** and therefore can be used mounted together with other equipment to provide a complete machine.

The equipment can't be used before the machine or the formation that it will take place in, is accordingly to the demands of the EC Machinery directive.

For the guarantee and safety, it is of uttermost significance that the instruction book is read before the machine is put into service.

Saue, Estonia

2019-04-29

Sign

CEO